



Kode

🛏️ 4 | 🚿 2.5 | 🚗 2

TOTAL HOUSE SIZE — 294.80M² (31.69SQ)

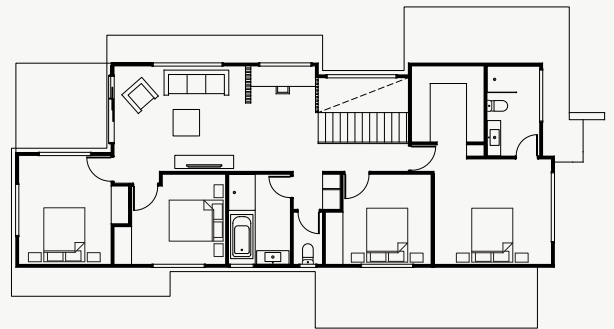
HOUSE TYPE SUITS A LOT WIDTH — 11.0M

PRODUCT FEATURES —

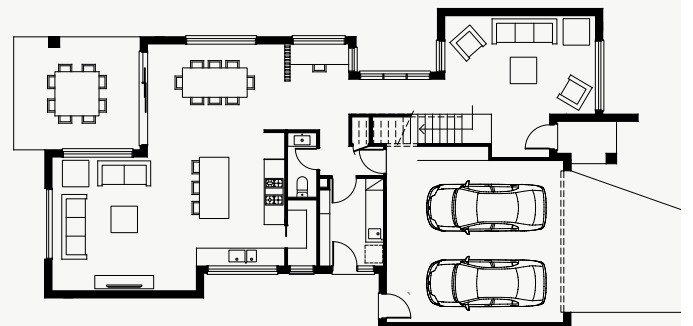
- 900mm Kitchen Appliances
- Stainless Steel Dishwasher
- Glass Splashbacks
- 20mm Stone Benchtops to Kitchen
- Ducted Gas Heating
- Remote Control Garage Door
- Coloured Driveway, Path, Fencing
- Clothesline and Letterbox
- 6-Star Energy Rating

For more information, please consult your dedicated Monomeath sales professional.

MONOMEATH



First Floor



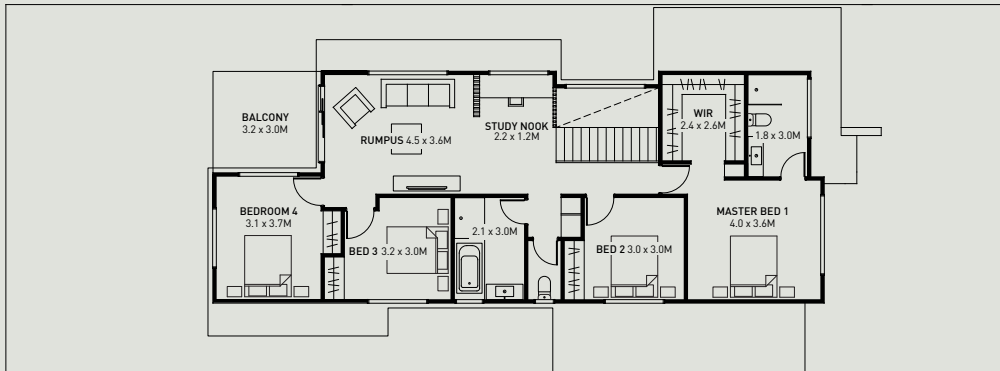
Ground Floor

Master Series

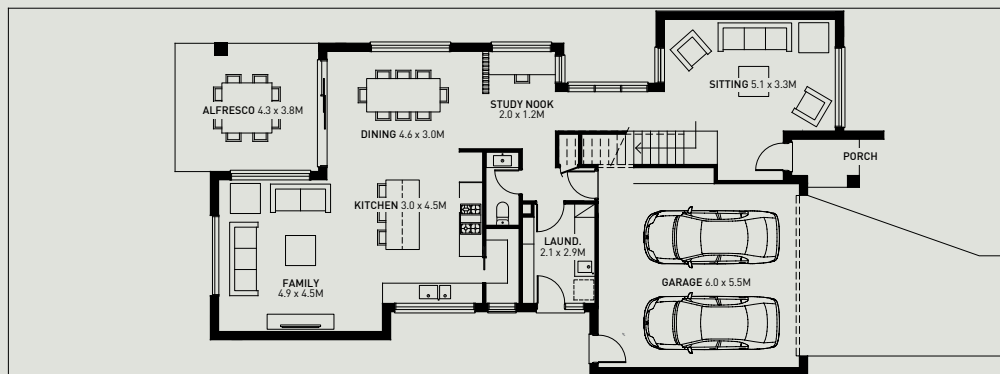
Kode — Floorplan



HOME LENGTH — 18.90M



First Floor



WIDTH — 11.0M

Ground Floor

Kode

4 | 2.5 | 2

HOME LENGTH — 18.9M

HOME WIDTH — 11.0M

AREA SCHEDULE —

GROUND FLOOR	114.38M ² (12.30SQ)
FIRST FLOOR	113.40M ² (12.19SQ)
GARAGE	38.33M ² (4.12SQ)
PORCH	2.75M ² (0.29SQ)
ALFRESCO/BALC.	25.94M ² (2.79SQ)
TOTAL	294.80M² (31.69SQ)

MONOMEATH

1300 478 060 • monomeath.com.au

Details effective as of April 2017. Reasonable steps have been taken to ensure that all material depicted in this brochure (including but not limited to; inclusions, colour selection, floorplans, home sizes and artist's impressions) are representative of the dwelling offered for sale. See your sales consultant for specific house drawings.